

# Gate Post Estates II Approved Color Palette April 2010 Edition

## Note:

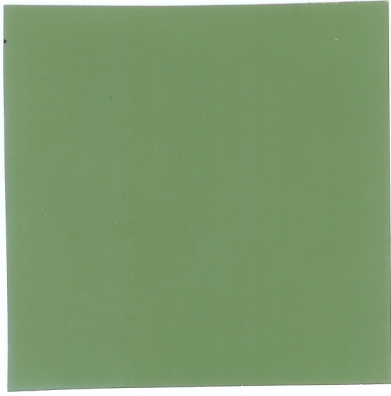
The colors in this palette have been separated by those appropriate for Doors & Shutters, and by Trim Colors.

Not all colors in this palette will work for your brick color. Please use a larger sample to hold against your brick to see if it will work.

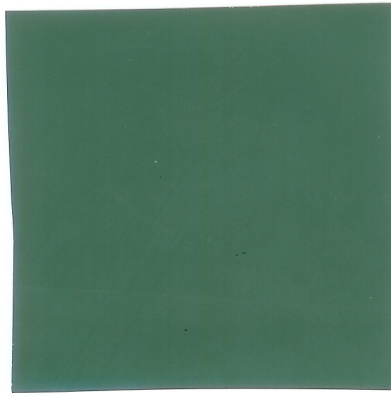
The ARB will maintain the original copies with the true paint samples – those that have been scanned or are on the computer will be different from the original. Benjamin Moore paints was used as the base colors, if you prefer a different paint company you may get an original Benjamin Moore sample and have it matched at any other company. They must have an original sample to match – it can not be the scanned or computerized version.

Any questions, please contact the ARB or HOA.

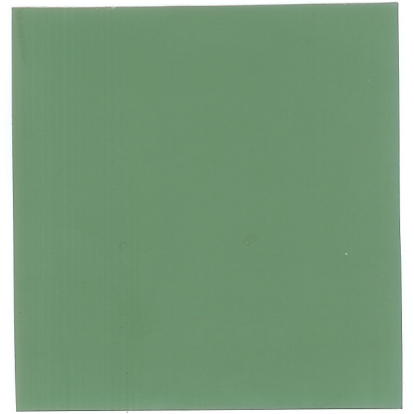
Door and Shutter Colors



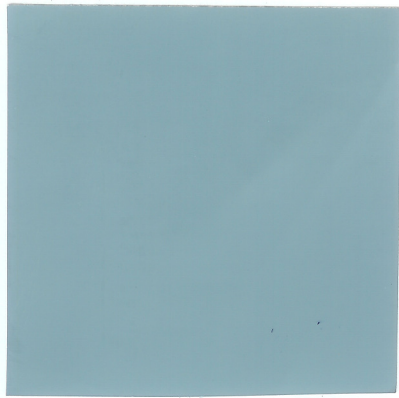
HC-122 Great Barrington Green



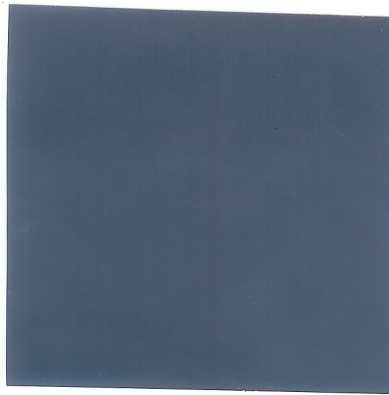
HC-135 Lafayette Green



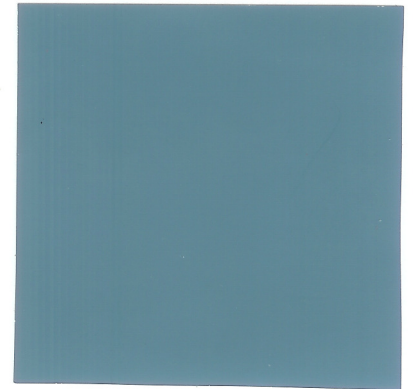
HC-126 Avon Green



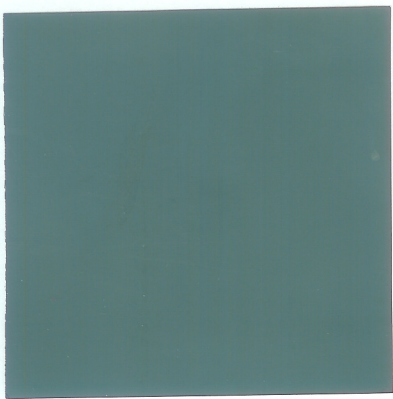
HC-145 Van Courtland Blue



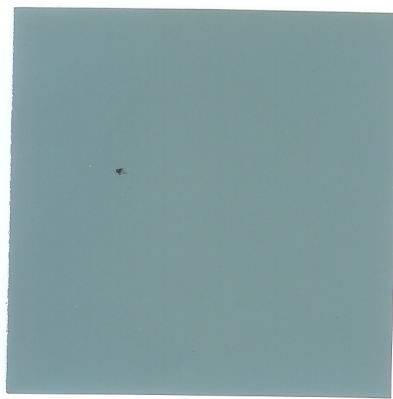
HC-155 Newburyport Blue



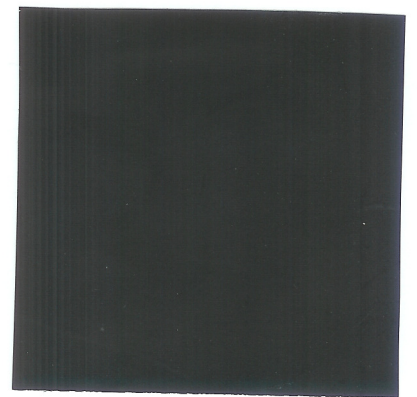
HC-159 Phillipsburg Blue



HC-160 Knoxville Gray

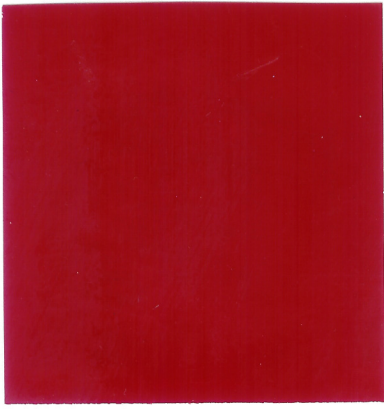


HC-161 Templeton Gray

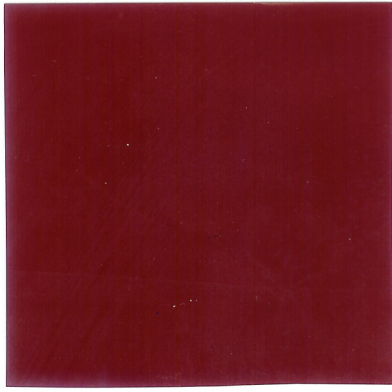


RMI-80 Black

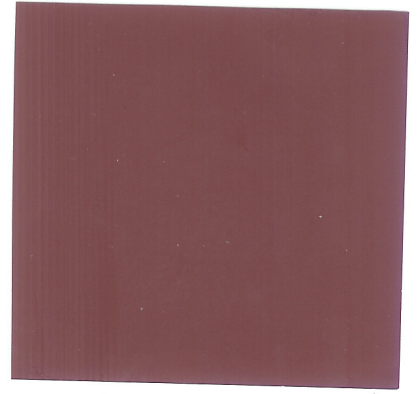
Door and Shutter Colors



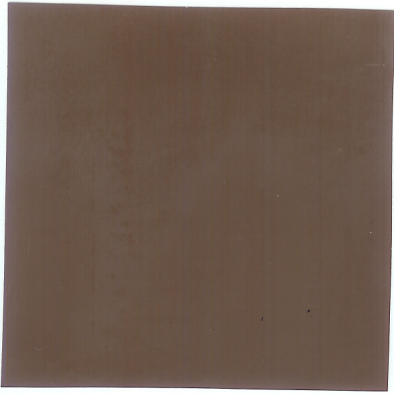
RME-25 Heritage Red



RME-26 Classic Burgundy



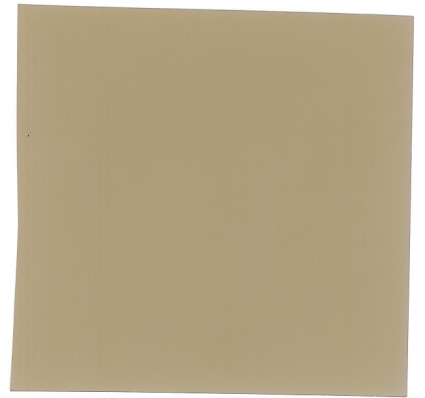
HC-61 New London Burgundy



HC-71 Hasbrouck Brown



1033 Hillsborough Beige



1034 Clay

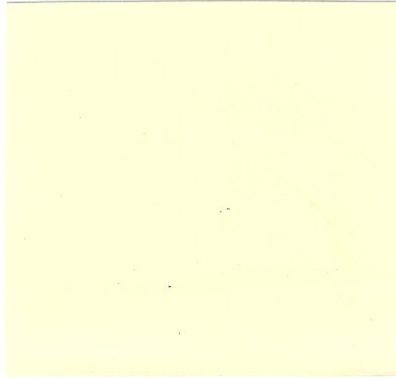


HC-105 Rockport Gray

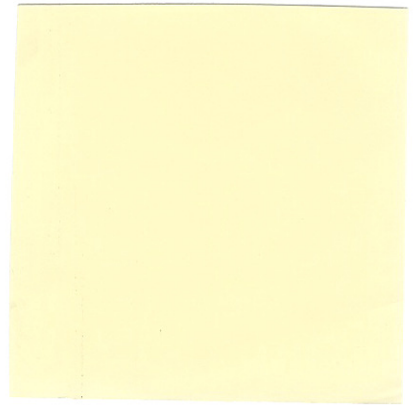
**Trim Colors**



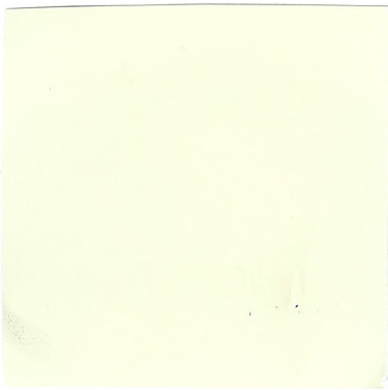
**RME-01 Brilliant White**



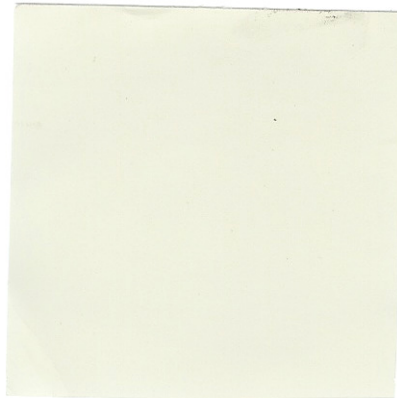
**HC-36 Hepplewhite Ivory**



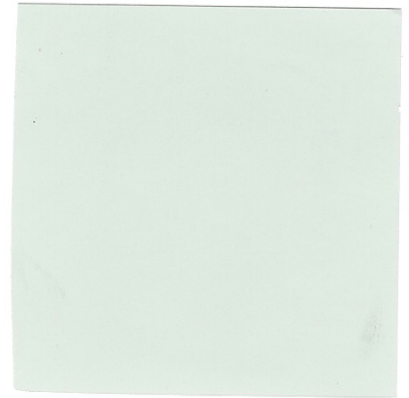
**HC-30 Philadelphia Cream**



**HC-174 Lancaster Whitewash**



**HC-173 Edgecomb Gray**



**HC-170 Stonington Gray**